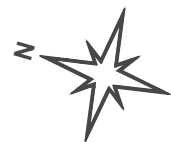
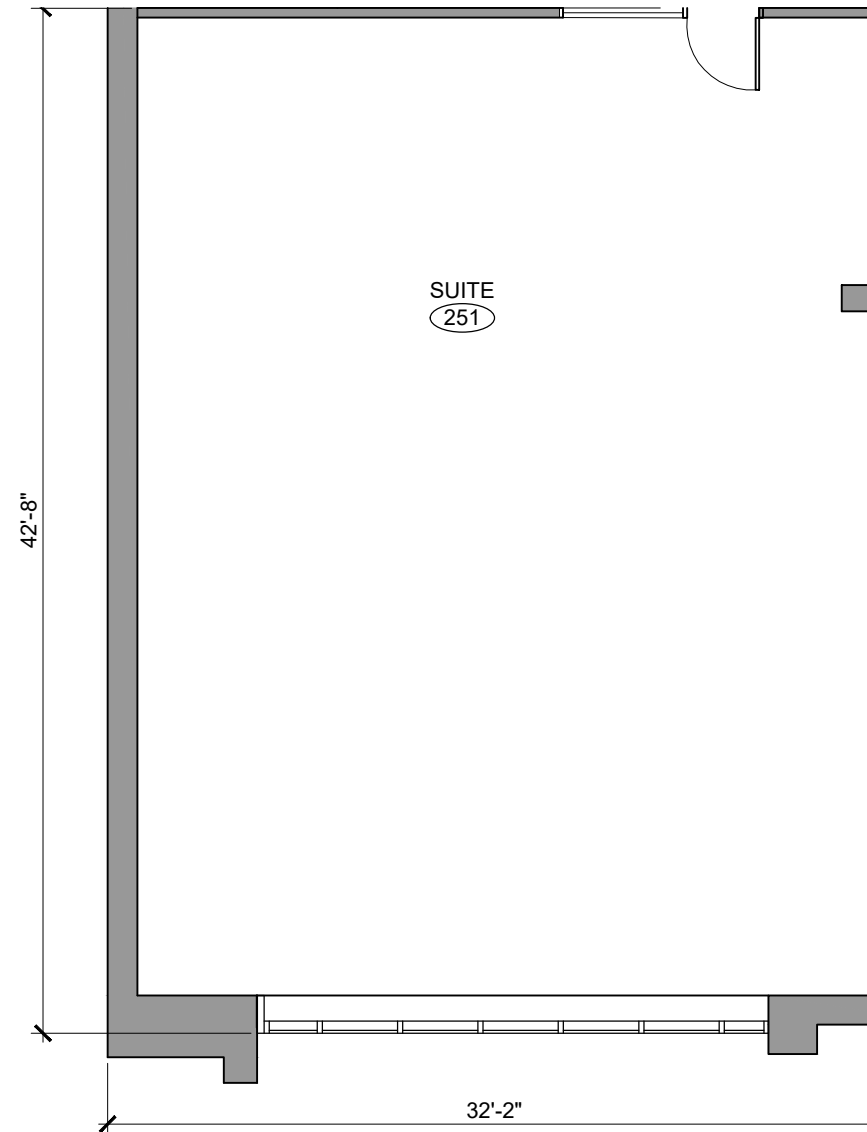


7005 Boulevard Taschereau

Brossard, QC J4Z 1A7

LOCAL 251



SUPERFICIE LOCATIVE

Boma 1426 pi.ca.

Terrasse N/A

Total 1426 pi.ca.

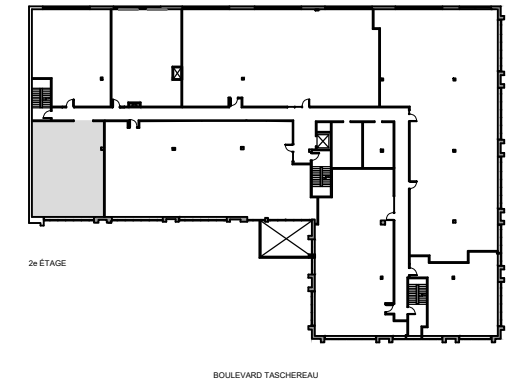
ÉCHELLE

1/8" = 1'-0"

VERSION

16 / 06 / 2020

PLAN CLÉ - 2 IÈME ÉTAGE



LES DIMENSIONS SONT SUJETS À CHANGEMENT
SANS PRÉAVIS.

POUR IMPRESSION SUR FORMAT 11X17



7055 Boul. Taschereau, bureau 640
Brossard, Québec,
J4Z 1A7

450-678-9821
Location@iwpc.ca
www.iwpc.ca